



Sri Lanka

12 Nights & 13 Days

Sri Lanka, often referred to as the Pearl of the Indian Ocean, is a mesmerizing island nation rich in natural beauty and cultural heritage. With its pristine beaches that stretch along the coastline, verdant forests teeming with wildlife, and majestic mountains offering breathtaking views, Sri Lanka captivates every visitor. Recognized by 'Lonely Planet' as the top travel destination for 2019, this enchanting island boasts a diverse landscape that includes lush rainforests, arid plains, and ancient historical sites that tell stories of its vibrant past. From the enchanting ancient cities to the rich biodiversity found in its national parks, Sri Lanka is a destination that promises unforgettable experiences for all who visit.



Sri Lanka Tour Summary

Day & date	City	Theme	Key Activities
Day - 1	Colombo	 Culture  City Life	<ul style="list-style-type: none"> • Arrival at morning and moving to Colombo • Next take a rest and at evening Colombo city tour • Night in Colombo
Day - 2	Sigiriya	 Culture  History	<ul style="list-style-type: none"> • Arrival and moving to Sigiriya and on the way visit Pinnawala elephant Orphanage • Next Dambulla Cave temple • Night in sigiriya
Day - 3	Sigiriya	 Culture  History  Village life  Hiking	<ul style="list-style-type: none"> • Visit sigiriya lion rock • Next visit Ayurvedic Herb treatment in sigiriya • Take a Sri Lanka village life experience with Sri Lankan lunch at Sigiriya • Night in sigiriya
Day - 4	Kandy	 Culture  History	<ul style="list-style-type: none"> • Moving to Kandy and on the way visit • Matale Spice gardens • Kandy City tour in tuck tuck • At evening Visit traditional dance show at Kandy • Night in Kandy
Day - 5	Kithigala	 Culture  History	<ul style="list-style-type: none"> • Moving to Kithulgala and on the way visit • Kandy tooth temple • Next visit Peradeniya Botanical gardens • At Evening 2.00PM White water Rafting and Canyoning in Kithulgala • Night in Kithulgala
Day - 6	Nuwara Eliya	 Adventure  Hiking  Tea	<ul style="list-style-type: none"> • Moving to Nuwara eliya and visit • Gregory lake and Little England in Nuwara eliya • Visit Labookele Tea factory • Night in Nuwara eliya

Day – 07	Ella	 Adventure  Culture	<ul style="list-style-type: none"> • Famous train ride from Nanu oya to Ella and I will pick you in Ella railway station • Next visit 9 Arch bridge in Ella • Night in Ella
Day – 08	Ella	 Adventure  Hiking  Culture Relaxing	<ul style="list-style-type: none"> • Visit little Adams peak in Ella • Next flying Ravana mega zip line for kids • Visit Ravana Pool Club for relaxing • At night Ella city tour • Night in Ella
Day – 09	Ella	 Adventure  Hiking Relaxing	<ul style="list-style-type: none"> • Visit 3 secret waterfall for swimming • Visit Nildiya pokuna • Visit Ravana waterfall • Night in Ella
Day – 10	Thissamaharama	 Adventure  Culture	<ul style="list-style-type: none"> • Moving to Yala national park for safari and on the way visit • Buduruwagala Temple • Safari at Yala 2.00PM to 6.00PM • Night in Yala
Day – 11	Mirissa	 Beach  Water Sports  Adventure  Culture	<ul style="list-style-type: none"> • Moving to Mirissa beach and on the way visit • Coconut Tree Hill in Mirissa • Snorkeling with Turtles in Mirissa • Visit weligama bay beach • Night in Mirissa
Day – 12	Mirissa	 Beach  Water Sports	<ul style="list-style-type: none"> • Whale and dolphin watching Tours • Visit secret Beach in Mirissa • Night in Mirissa
Day – 13	Negambo	 Beach  Water Sports  Adventure  Culture	<ul style="list-style-type: none"> • Moving to Negambo and on the way visit • Galle Dutch port • Madu river for Canyoning and fish therapy • Night in Negambo for new year Party and I will let you know more details about that later • Next day early morning departure and time to say good bye to your family



Colombo city

Sri Lanka's bustling capital offers a mix of modern and colonial architecture, vibrant markets, and cultural sites, making it a great place to explore before departure.





Day 01 Program – Colombo

- Arrival at morning and moving to Colombo
- Next take a rest and at evening Colombo city tour
- Night in Colombo



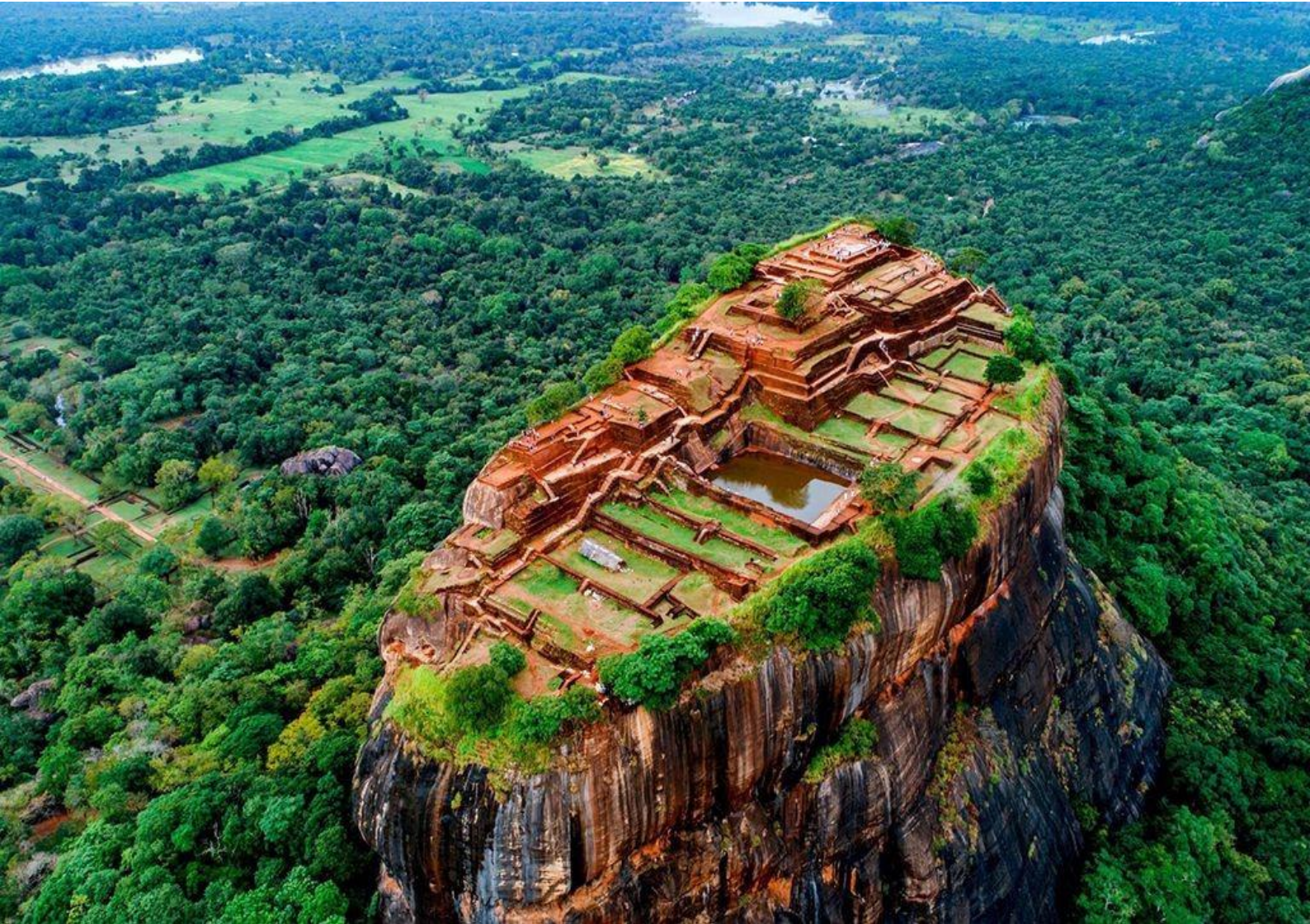
Overnight stay in Colombo.



Warm Weather Climate [Avg. Temp. 24°C - 28°C]



Approximate travel time from **Bandaranaike International Airport** to **Colombo** is 1 hour 11 mins. *



Sigiriya, or the "Lion Rock," is one of Sri Lanka's most impressive ancient sites, known for its unique blend of natural beauty, historical significance, and architectural marvels. Built by King Kashyapa in the 5th century AD, this 200-meter-high rock fortress was once a royal palace and is now a UNESCO World Heritage Site. Sigiriya features sophisticated gardens, hydraulic systems, and the famous frescoes of celestial maidens, which capture the artistic skill of ancient Sri Lankan painters. Here is a suggested tour plan to experience the full scope of Sigiriya's beauty and history:



The Pinnawala Elephant Orphanage in Sri Lanka is a renowned sanctuary dedicated to caring for orphaned, injured, and abandoned elephants. Founded in 1975 by the Sri Lankan Department of Wildlife Conservation, it initially started with a small group of elephants and has since grown into one of the largest elephant sanctuaries in the world. Located near the Ma Oya River in Pinnawala village, the orphanage provides a natural habitat where these elephants can live safely and interact freely.

One of the highlights at Pinnawala is the daily routine where the elephants are led to the river for a communal bath. This scenic event is a popular attraction for visitors, who can watch the elephants splash, socialize, and enjoy the water. The orphanage also offers feeding sessions, where tourists can observe or even participate in bottle-feeding baby elephants. The orphanage is actively involved in breeding efforts, contributing to the conservation of the species and preserving the cultural heritage of Sri Lanka's elephant population.

Detailed Itinerary

Day 02 & 03 Program – Sigiriya

Day 01 -

- Arrival and moving to Sigiriya and on the way visit
- Pinnawala elephant Orphanage
- Next Dambulla Cave temple
- Night in sigiriya

Day 02 –

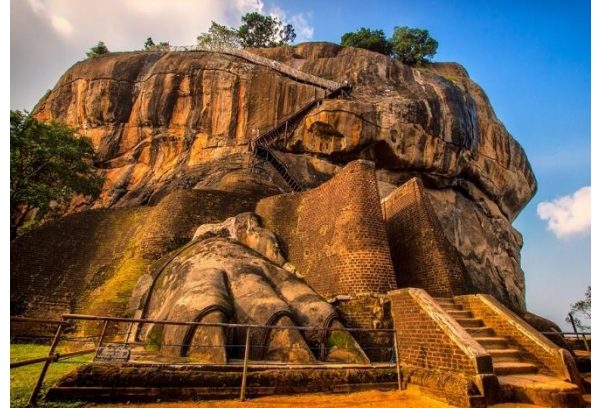
- Visit sigiriya lion rock
- Next visit Ayurvedic Herb treatment in sigiriya
- Take a Sri Lanka village life experience with Sri Lankan lunch at Sigiriya
- Night in sigiriya

 Overnight stay in Sigiriya.

 Warm Weather Climate [Avg. Temp. 22°C - 29°C]

 Approximate travel time from **Colombo** to **Sigiriya** is 3 hours 30 mins. *

Sigiriya Highlights



Designated a World Heritage Site in 1982, Sigiriya Rock Fortress built in the 5th century, rises a sheer 200 meters above a forested plain.



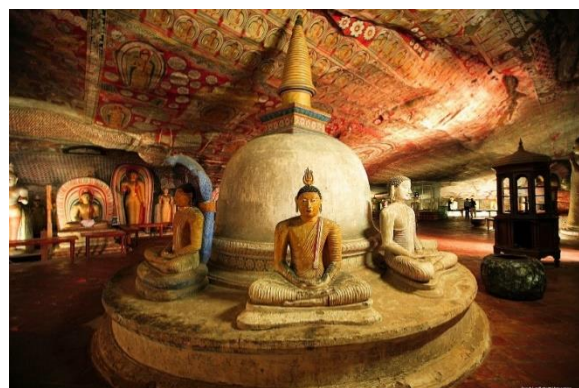
This boat ride is ideal for nature lovers and bird watchers. Experience the real Sri Lankan rural village life where you will be surrounded with the scrub jungle and the will travel in a Bullock cart in a village through golden vibrant bird life.



Get invited to a villager's home and experience the village. Though this national park is most famous for elephants, a life. Embrace the warm hospitality as you enjoy a home- diversity of wildlife lives here including spotted deer, cooked meal with a tropical drink, purple-faced langur monkeys, etc.



Ayurveda Treatment in Sigiriya Ayurvedic treatment in Sigiriya offers visitors a unique opportunity to experience traditional Sri Lankan wellness therapies amidst scenic surroundings. Many resorts and wellness centers near Sigiriya provide authentic Ayurvedic treatments, including massages, herbal baths, and oil therapies designed to balance the body, mind, and spirit.



Dambulla Cave Temple

A UNESCO World Heritage Site, this ancient cave complex is adorned with over 150 Buddha statues and vibrant murals dating back over 2,000 years. The temple serves as a spiritual and cultural landmark, highlighting Sri Lanka's rich Buddhist heritage.

★ Pinnawala Highlights



This orphanage is one of Sri Lanka's most popular wildlife attractions, providing a safe haven for orphaned and injured elephants. It's essential for wildlife conservation and offers a rare opportunity to observe elephants in a natural setting. Watching them bathe in the river is a memorable experience





Explore the cultural capital of Sri Lanka and delve deep into the essence of the island. With mind-blowing scenery and well-preserved Sri Lankan culture and traditions, the city will surprise you at every corner. The temple of the tooth being the main attraction, Kandy has many interesting attractions, which include Udawaththa Kele Sanctuary, Kandy lake, and Bahirawa Kanda temple. Get a glimpse into the luxurious lives of the ancient king as you experience the authentic Sri Lankan culture while pampering yourself with modern luxuries and enjoying the cool climate and traditional valu



Day 04 Program – Kandy

- Moving to Kandy and on the way visit
- Matale Spice gardens
- Kandy City tour in tuck tuck
- At evening Visit traditional dance show at Kandy
- Night in Kandy



Overnight stay two days in **kandy**.



Warm Weather Climate [Avg. Temp. 18°C - 29°C]



Approximate travel time from **Sigiriya** to **Kandy** is 2 hour 32 mins

Kandy Highlights



Kandy

known for its sacred temples and serene lake, Kandy is a key cultural center in Sri Lanka, with rich traditions and historical significance.



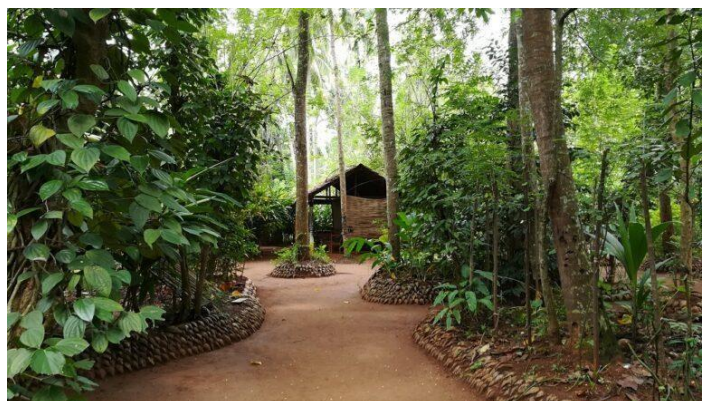
Kandy lake

Kandy lake round Go for a walk around Kandy Lake, located at the heart of Kandy city, next to the temple of the tooth, the glistening waters of the lake will calm your mind.



Kandy dance show

Kandy dance show is a cultural highlight, featuring traditional Sri Lankan music, vibrant costumes, and dance styles that have been preserved for centuries. It connects visitors to the island's artistic heritage.



Spices Garden

Sri Lanka is famous for its spices, and this garden tour provides an educational experience on how spices like cinnamon, cloves, and cardamom are grown and used in traditional medicine, food, and beauty products



Kandy view point

Kandy view point Enjoy the beauty of the entire Kandy city, from famous landmarks to lush greeneries to the busy city life of the area at the Kandy viewpoint.

Kithulgala



Kithulgala is a scenic town in Sri Lanka known for its lush rainforests, white-water rafting on the Kelani River, and trekking through nature. It's famous for birdwatching, waterfalls, and the Belilena Cave, an archaeological site. Kithulgala also hosted the filming of *The Bridge on the River Kwai*. The area offers a variety of adventure sports and is a popular destination for eco-tourism.



Day 05 Program – From Kandy to Kithulgala

- Moving to Kithulgala and on the way visit
- Kandy tooth temple
- Next visit Peradeniya Botanical gardens
- At Evening 2.00PM White water Rafting and Canyoning in Kithulgala
- Night in Kithulgala



Overnight stay two days in **Kithulgala**.



Warm Weather Climate [Avg. Temp. 22°C - 29°C]



Approximate travel time from **Kandy** to **Kithulgala** is 1 hour 50 mins

☀ From Kandy to Kithulgala Highlights



Royal Botanical Garden

Royal Botanical Garden The garden is full of tropical plants, including a range of flowers, ferns, palm trees, and orchids and provides ample opportunities to get lost in nature



Temple of the Tooth

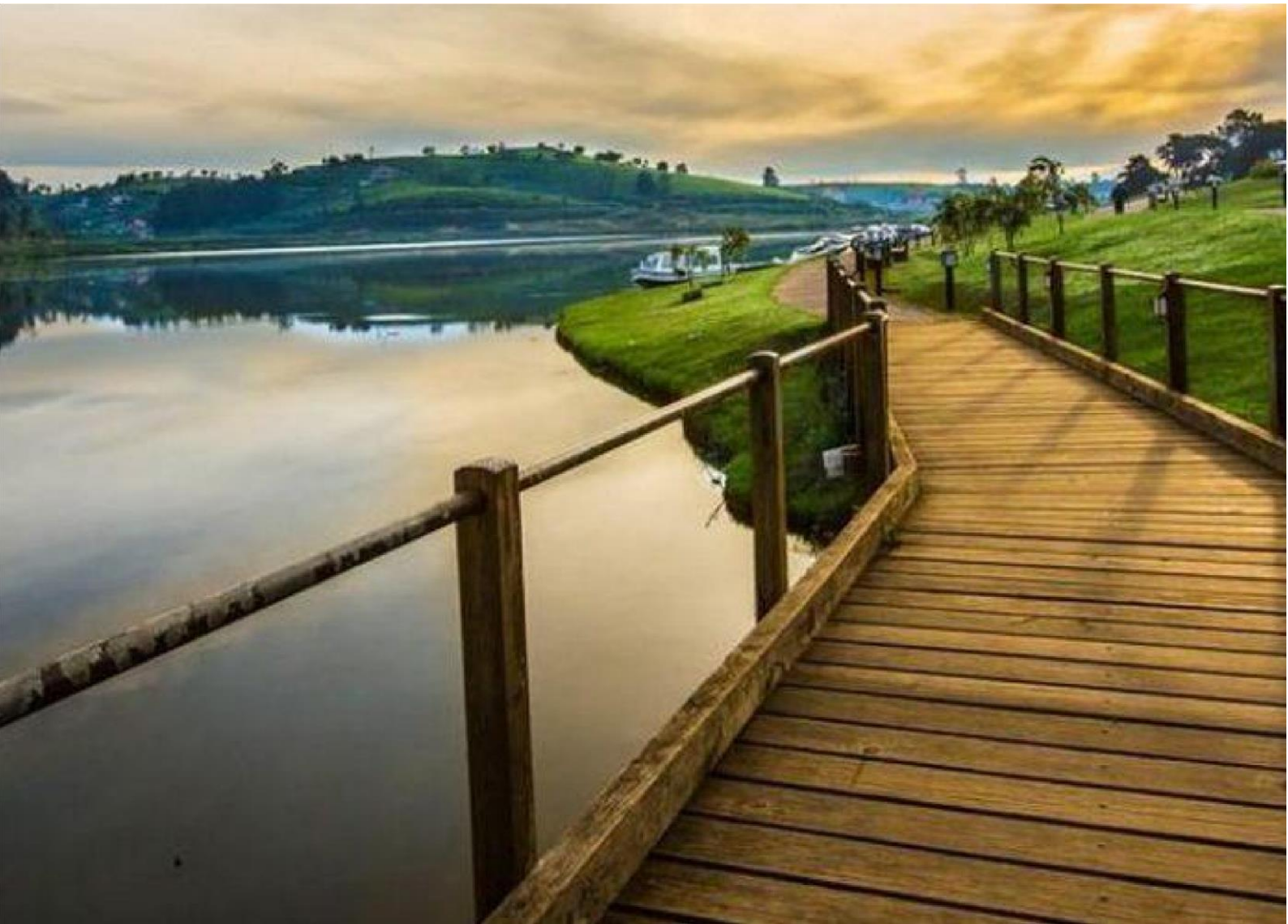
Temple of the Tooth Relic The heart of Sri Lankan Buddhists, which is the home to the sacred tooth relic of Buddha. The ancient place complex is famous for wall paintings, and wood carvings



Kitulgala, Sri Lanka, is a top spot for white water rafting and canyoning, perfect for thrill-seekers. Rafting on the Kelani River offers fun Class II-III rapids, suitable for beginners and lasting about an hour. Canyoning adds extra adventure with rock sliding, waterfall abseiling, and cliff jumping in lush rainforests. The best time to go is during the monsoon season (May to October) for higher water levels, though activities are available year-round.



NUWARA ELIYA



In the central hills of the island rests the Nuwara Eliya city which is fondly known as ‘Little England’ as it resembles England in its cool climate and colonial-style bungalows. When you walk around this calm city, you will not be able to believe that this chilly climate is a part of tropical Sri Lanka and its sunny beaches. Bath in the natural pools of mesmerizing waterfalls, visit breezy tea estates, and explore the lush greenery that will surround you! Have a lovely stay in this city of wonder and get a chance to explore its hidden treasures!



Day 06 Program – Nuwara Eliya

- Moving to Nuwara Eliya and visit
- Gregory lake and Little England in Nuwara eliya
- Visit Labookele Tea factory
- Night in Nuwara eliya



Overnight stay in **Nuwara Eliya**.



Tropical Weather Climate [Avg. Temp. 18°C - 29°C]



Approximate travel time from **Kithulgala** to **Nuwara Eliya** is 2 hour 18 mins. *

★ Nuwara Eliya Highlights



Tea plantation

Known as “Little England” for its colonial-era architecture and cool climate, Nuwara Eliya is also the heart of Sri Lanka’s tea industry. Touring a tea factory shows the journey from leaf to tea cup, with tastings of Sri Lanka’s world-famous Ceylon tea.



Gregory Lake

Lake Gregory is a reservoir in the heart of the hill city, Nuwara Eliya. It was constructed during the period of British Governor Sir William Gregory in 1873.

Little England

"Little England" refers to Nuwara Eliya, Sri Lanka, a region influenced by British colonial architecture and culture. With its cool climate, Tudor-style buildings, and tea plantations, it resembles an English countryside, making it a unique and popular tourist destination.



Must Do Activity

Tea plantation



“*"Step into the lush green hills of Sri Lanka's famous tea plantations, where rows upon rows of tea bushes stretch as far as the eye can see."*

Known for its world-renowned Ceylon tea, Sri Lanka's central highlands offer a cool, misty climate perfect for cultivating this prized crop. Take a scenic tour through plantations in Nuwara Eliya, Ella, or Kandy, and witness tea pickers at work, skillfully gathering leaves by hand. Many estates offer guided tours where you can learn about the tea-making process from leaf to cup, and savor freshly brewed samples. The best time to visit is during the drier months, from January to April, when the hills are bright and the views are stunning. Experience the tranquility and beauty of Sri Lanka's tea country—a journey through both culture and nature."



Ella is a beautiful small backpacker-hub on the southern edge of Sri Lanka's Hill Country. It has become to go to town in the hill country for tourists and as a result has a reasonably well-established tourism-orientated economy. It's situated in the middle of beautiful countryside, with small vegetable plots in the valleys, tea plantations on the hill slopes and forests on the tops. The climate throughout most of the year is typical of the high Hill Country, with a hot sun by midday, but a moderate air temperature.

Detailed Itinerary



Day 07 / 08 & 09 Program – Ella

Day 07 -

- Famous train ride from Nanu oya to Ella and I will pick you in Ella railway station
- Next visit Nine Arch bridge in Ella
- Night in Ella

Day 08 –

- Visit little Adams peak in Ella
- Next flying Ravana mega zip line for kids
- Visit Ravana Pool Club for relaxing
- At night Ella city tour
- Night in Ella

Day 09 –

- Visit 3 secret waterfall for swimming
- Visit Nildiya pokuna
- Visit Ravana waterfall
- Night in Ella



Overnight stay 3 days in Ella.



Tropical Weather Climate [Avg. Temp. 18°C - 29°C]



Approximate travel time from **Nuwara Eliya** to **Ella** is 1 hour 49 mins. *



Ella Highlights



This train journey

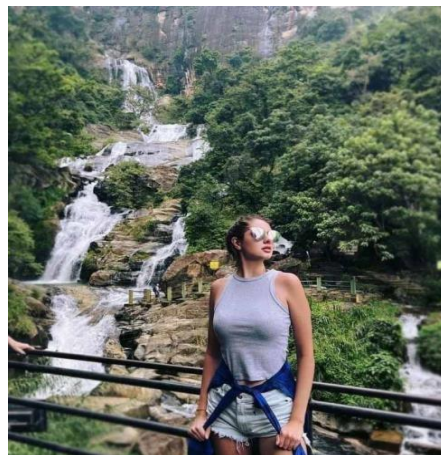
This train journey is the most scenic in the world, offering panoramic views of rolling tea plantations, misty mountains, and lush valleys, providing a memorable visual experience of Sri Lanka's natural beauty.



Little Adam's Peak Little Adam's Peak situated in Ella makes a short hike of 45 minutes. At the top, you will be welcomed with a splendid view of Ella Gap.



Nine Arch Bridge This impressive colonial railway bridge, surrounded by dense jungle and tea plantations, is a marvel of construction. The bridge, along with passing trains, creates a picturesque scene perfect for photography.



Waterfalls

Ella is surrounded by scenic waterfalls, such as Ravana Falls, that offer refreshing swimming spots in a natural setting. Swimming here adds a fun and relaxing break in the midst of Sri Lanka's beautiful landscapes.



Mega Zip Line

The adrenaline-pumping ride offers an unforgettable adventure as you glide high above the landscape, surrounded by nature's beauty. Whether you're an adventure seeker or nature lover, this zipline offers a unique experience like no other.



Nildiya Pokuna, or "Blue Water Pond," is a hidden underground pond near Dambulla, Sri Lanka, known for its striking blue waters within a cave. This serene, mysterious spot draws adventurous visitors intrigued by its natural beauty and historical significance.

Train journey



“

"Experience one of the world's most scenic train journeys from Nanu Oya to Ella, a ride through the heart of Sri Lanka's lush hill country.

This iconic route takes you past rolling tea plantations, misty mountain peaks, and picturesque villages, offering panoramic views of deep valleys and vibrant green landscapes. As the train winds through tunnels and over bridges, you'll witness breathtaking sights like the Nine Arches Bridge and distant waterfalls cascading down rugged cliffs. Known for its charming open doors and windows, this journey is perfect for travelers looking to capture the natural beauty of Sri Lanka up close. Whether you're seated or standing by the doors to feel the cool mountain breeze, the Nanu Oya to Ella train promises an unforgettable adventure that's both relaxing and awe-inspiring."



Yala national park



As Sri Lanka's second-largest national park, Yala is famous for its biodiversity, particularly its high density of leopards, making it one of the best places in the world to spot these elusive big cats. Other wildlife includes elephants, sloth bears, and diverse bird species. It's a must-visit for nature lovers and those interested in wildlife photography.



Day 10 Program – Thissamaharama

- Moving to Yala national park for safari and on the way visit
- Buduruwagala Temple
- Safari at Yala 2.00PM to 6.00PM
- Night in Yala



Overnight stay at in **Thissanaharama**.



Tropical Weather Climate [Avg. Temp. 26°C - 30°C]



Approximate travel time from **Ella** to **thissamaharama** is 1 hour 57 mins. *



Yala Highlights



Yala is famous for its large population of Asian elephants. Visitors to the park often encounter herds of elephants roaming freely, particularly in the park's open plains and near water sources. These majestic animals can be seen foraging for food, bathing in lakes, or socializing with other elephants. The best time to observe elephants is during the dry season (May to August), when they gather around the remaining water holes.



Yala is one of the best places in the world to spot the elusive Sri Lankan leopard. The park's dense forests and scrublands provide excellent camouflage for these solitary predators. Visitors have a good chance of encountering leopards, especially in the early morning or late afternoon when they are most active. The park's leopard population is notable for its unique adaptations to the local environment, and sightings of these magnificent big cats are there.

Buduruwagala is an ancient Buddhist rock temple in southern Sri Lanka, known for its large, 15-meter-tall standing Buddha statue. The site features seven rock-carved figures, including bodhisattvas, and dates back to the 10th century. It blends Mahayana and Theravada influences and is a significant cultural and archaeological landmark.



Yala national park: Home of the majestic giants of the Sri Lankan forests

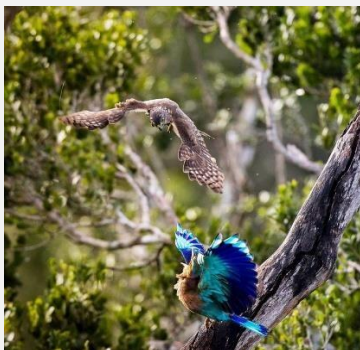
January 1 - December 31



“

"Get ready for an adventure in the wild with a safari at Yala National Park! Known for its diverse wildlife and stunning landscapes,

Yala offers an unforgettable chance to encounter the elusive Sri Lankan leopard, one of the highest leopard densities in the world. As you explore the park's open grasslands and dense forests, keep your eyes peeled for elephants, sloth bears, and crocodiles, along with a rich array of bird species. The dry season, from February to October, is ideal for wildlife sightings, as animals gather around water sources. Prepare to be captivated by the untamed beauty and natural wonders of Yala on a safari experience like no other."





Just a few kilometers from Weligama, Mirissa is famous for its picturesque beaches and vibrant nightlife. This beach town is a hotspot for whale watching, with excursions often providing sightings of blue whales, sperm whales, and dolphins. Mirissa Beach itself is ideal for swimming, snorkeling, and sunbathing, and it offers scenic views of the ocean from a small hill at one end. Visitors enjoy the relaxed atmosphere, seafood restaurants, and beachside bars. Mirissa is also home to the Parrot Rock, a small island you can walk to during low tide, offering stunning views of the coast.



Day 11 & 12 Program - Mirissa

Day 11 -

- Moving to Mirissa beach and on the way visit
- Coconut Tree Hill in Mirissa
- Snorkeling with Turtles in Mirissa
- Visit Weligama Bay Beach
- Night in Mirissa

Day 12 -

- Whale and dolphin watching Tours
- Visit Secret Beach in Mirissa
- Night in Mirissa



Overnight stay in Mirissa.



Tropical Weather Climate [Avg. Temp. 25°C - 30°C]



Approximate travel time from **Yala** to **Weligama** is 2 hour 1min.

Mirissa Highlights



Snorkeling with turtles

The clear waters around Mirissa are known for marine life, especially sea turtles. Snorkeling here provides a close encounter with these gentle creatures, making it a unique and memorable experience



Secret beach in Mirissa

This hidden gem offers a quieter, secluded beach experience, perfect for relaxation, snorkeling, and enjoying the natural beauty without the crowds.



Water Sports

Sri Lanka is home for stunning beaches and adventurous water sports. Try plenty of exciting water sports with your loved ones!



Whale and Dolphin Watching

Mirissa is a top destination for whale watching, offering a chance to see blue whales, sperm whales, and dolphins in their natural habitat. It's an exhilarating experience for animal enthusiasts and eco-tourists.



Coconut Tree Hill in Mirissa, Sri Lanka, is a stunning spot known for its cluster of coconut trees on a hill overlooking the ocean. It's a favorite for sunrise and sunset views, offering a picturesque tropical landscape popular with photographers and travelers.



Seasonal Activity



“Grab your snorkeling gear and cameras, and get ready for an unforgettable experience with the whales and dolphins of Mirissa Sri Lanka!

Off the coast of this scenic bay, witness the awe-inspiring sight of blue whales, the largest animals on Earth, and playful pods of dolphins gliding through the waters. The warm, nutrient-rich waters of Mirissa attract these magnificent creatures, creating one of the best whale-watching locations in Sri Lanka. Spinner, bottlenose, and Risso's dolphins can often be seen leaping and playing near the boats. The peak season, from November to April, offers the calmest seas and the best chances to spot these incredible marine animals as they migrate through Sri Lankan waters."



Negombo is a coastal city in Sri Lanka, known for its beautiful beaches, vibrant fishing industry, and colonial history. It's a popular tourist destination near Colombo and the international airport



Day 13 Program – From Mirissa to Negambo

- Moving to Negambo and on the way visit
 - Galle Dutch port
 - Madu river for Canyoning and fish therapy
 - Night in Negambo for new year Party and I will let you know more details about that later
-
- Next day early morning departure and time to say good bye to your family



Overnight stay in Negambo.



Warm Weather Climate [Avg. Temp. 22°C - 29°C]



Approximate travel time from **Mirissa** to **Negambo** is 2 hours 43 mins. *



From Mirissa to Negambo Highlights



Galle Dutch Port

This 16th-century fort, built by the Portuguese and fortified by the Dutch, is a UNESCO World Heritage Site. It features colonial architecture, ocean views, and historic charm, representing a fusion of European and Sri Lankan cultures.



Madu River

This peaceful ride through the river's mangrove ecosystems provides opportunities to see unique flora and fauna, including fish, birds, and rare plants.



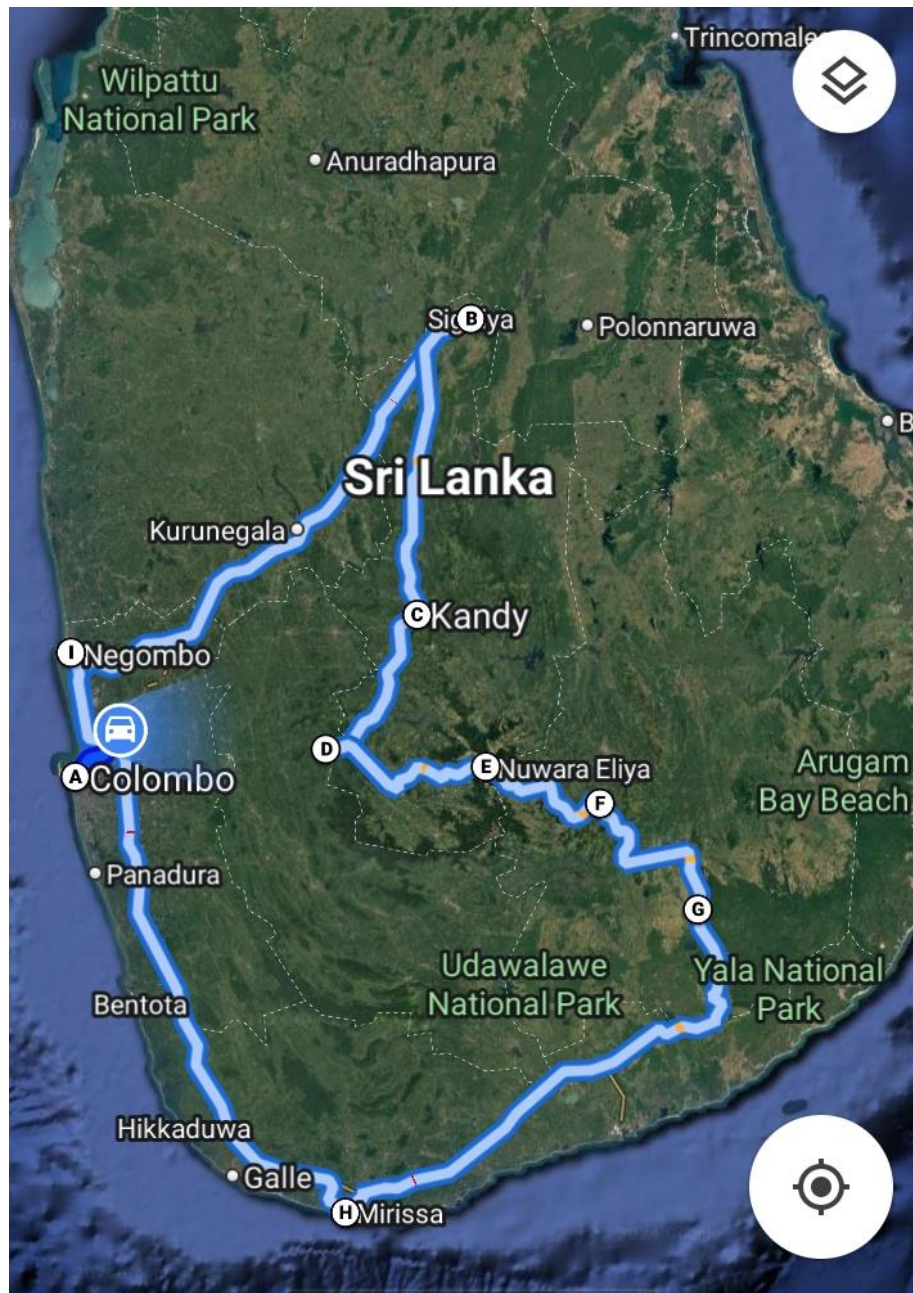
Fish therapy in the Madhu River, Sri Lanka, involves immersing feet in natural pools where "doctor fish" gently nibble away dead skin, providing a soothing exfoliation. This popular activity lets visitors relax while exploring the river's beautiful mangroves, islands, and local wildlife.

Departure

Time to say good bye.....



Your Tour Map



Thank You!

Your travel partner in Sri Lanka

Prepared by; Chamara

Head operation Ceylon Chama Tours.